

Factors impacting on farmers' willingness to pay for water in temporary water markets

Henning Bjornlund and Peter Rossini

Centre for Land Economics and Real Estate Research, School of International Business,
University of South Australia, Adelaide

ABSTRACT

Water markets are increasingly being relied upon by international institutions and national governments to facilitate a reallocation of water from inefficient low value users to efficient high value users, and from rural to urban users, while minimizing the socio-economic and community impact of such reallocations within rural communities. This is a problem in both developed and developing countries. However, very few markets are actually in operation throughout the world. Australia is undoubtedly leading the world in this regard; and so there is a great interest in learning from Australian experiences. This paper analyzes factors which influence irrigators' willingness to pay and accept prices for water in temporary markets. The analyses are based on ten years of data on monthly prices paid in the market and indicators of the hypothesized drivers of price. Correlation, regression and time series techniques are applied to the data. The analyses are clear in their findings: the major driver of price during the ten-year study period are (i) water scarcity determined by the annual availability of water (allocation levels) and (ii) demand factors determined by the level of natural precipitation and evaporation. Irrigators with significant investments in permanent plantings, pastures, dairy herds, and milking equipment are willing to pay prices in excess of water's value in productive use in order to protect the production, and therefore the value, of their assets. Commodity prices and macro-economic indicators have only had a minor impact on prices.

Keywords: Water markets, water market drivers, Victoria, Australia,

1. INTRODUCTION

International property investments all over the world, and certainly those in developing countries in the Asia Pacific Region, are an integral part of the globalization process. This process in turn leads to urbanization, which causes a sharp increase in the population and the level of economic activities within urban regions, and which escalates demand for water resources for urban uses. In most countries water resources are fully or over committed, predominantly for agricultural uses; increased urban demand will therefore necessarily result in a need to reallocate scarce water resources from rural to urban uses. Such reallocation will lead to reduced economic activity and social hardship within the rural areas and an increased dependence on food imports. In order to minimize these impacts it is important that the reallocation process is guided by appropriate water policies, which should ideally encourage a reallocation of rural water from low value users to higher valued and more efficient water users in the farm sector, as well as provide for some financial compensation to those rural users who give up their access to water.

Many international organizations and national governments currently place great importance on water markets as the most appropriate policy instrument to facilitate this reallocation of water. At the same time they seek to promote more efficient and higher valued water use and to provide some financial compensation to selling farmers so that the socioeconomic impact within rural communities can be minimized. Both the permanent and temporary water markets play an important role in this process. Permanent markets facilitate transfers of long-term access to water while temporary markets facilitate transfers of the temporary right to use water (predominantly on a seasonal basis). Urban water authorities can take two main approaches to ensure that there is sufficient water for urban uses during all years.

Firstly, they can buy enough water on the permanent market to ensure sufficient water for the city even during years of drought and then sell the water back to the rural users during years when it is not needed. Second, they can acquire only enough long-term water entitlements for say 70% of all years and then buy water on the temporary market during years of drought. Both of these approaches involves the use of the temporary as well as the permanent market; it is therefore important to understand which factors determine the prices that farmers are willing to pay and accept for water as well as the volume that is traded in the market.

This paper will investigate which factors determine the price that farmers are willing to pay by analyzing the relationship between mean monthly prices and various hypothesized determinants of irrigators' willingness to pay for water. Ten years of monthly data for prices and potential drivers have been gathered from within the Goulburn Murray Irrigation District (GMID) in Victoria, Australia. These data have been analyzed using correlation, regression and time series techniques to establish the strength of such relationships.

2. SOME THEORETICAL EXPECTATIONS AND ANECDOTAL OBSERVATIONS

It could be hypothesized that the willingness to pay for water is a product of four factors: (i) the profit that can be gained from using the water; this factor should be reflected in the fluctuations in prices for the main commodities produced within the region in which water can be traded; (ii) supply of water; this is measured by the allocation level announced at the beginning of the season and then revised during the season depending on availability of water within the reservoirs supplying the region. The allocation level is announced as the proportion of their entitlements that irrigators can use during that season; (iii) demand for water; this would be influenced by the level of the seasonal allocation and commodity prices as discussed above, but also by the level of natural precipitation and evaporation. Finally demand for water could be determined by the price of substitute goods, within the study region this is relevant since dairy farming is one of the high value uses and dairy farmers can substitute the use of water to grow grass by buying feed in the form of hay, feeding grain or silage; and (iv) the potential loss irrigators would suffer if insufficient water is applied during periods of water scarcity. This is particularly an important issue for farmers with permanent plantings, which could be lost, or the yield from which could be negatively affected for several years, if insufficient water is applied; it is also an important issue for dairy farmers with significant investments in dairy herds, milking equipment and permanent pastures.

This section will briefly discuss each of these theoretical factors and provide some anecdotal evidence from within the GMID. The discussions will be brief since the first named author has discussed this at length in a number of other recent publications (Bjornlund 2003a,b,c,d); the reader is referred to these publications for a more detailed discussion. The following discussion is only included in this paper as the justification for the choice of variables in the subsequent analysis.

2.1 Commodity prices

When commodity prices are high it could be expected that irrigators are willing to pay a higher price for water and that irrigators will require a higher price in order to be convinced to sell their water. Fundamentally, the differences in value generated per ML of water used within the area should provide the incentive to trade for both buyers and sellers. Within the study region there is a great diversity in gross margin figures for water in different uses: (i) grazing for cattle or sheep at A\$50/ML; (ii) grain growing at about A\$100/ML; (iii) grazing for dairy production at about A\$500/ML; (iv) various vegetables at A\$400–1,800/ML; and (v) wine grapes at about A\$2,800/ML (DNRE 2001). Research in Canada has shown a similar heterogeneity of water values across commodities (Adamovicz and Holbulyk 1996). The observed trading pattern within the study region reflects these gross margin figures with grazing and grain growing

properties normally supplying the water while vegetable growers, horticultural growers and dairy farmers makes up demand (Bjornlund 2002c and Bjornlund and McKay 2000).

Traditionally the low value producers such as lamb, cattle, wool and grain growers supply the temporary market while the higher valued producers such as dairy farmers and horticultural growers make up demand. When commodity prices for these low value producers were high during 2001/02, they were reluctant to sell and this was a contributing factor to escalating water prices toward the middle of that season. Likewise when dairy prices were relatively high towards the end of that season it was a contributing factor to record high prices.

2.2 Supply of water and the drive to prevent losses

When supply is low, competition for water will be high and irrigators with permanent plantings or pastures are likely to be desperate to buy water to protect these long-term investments. These irrigators are therefore not reacting to the potential gain from buying water, but rather to the size of the potential losses, which can be prevented by buying additional water. There is ample anecdotal evidence of this behaviour in the markets within the study region during the last five to six seasons when water allocations have been very low. Horticultural growers have twice set the price at the maximum level (this is equal to the penalty payable for use in excess of allocation, and has twice been revised upward in response to prices in the market reaching that limit). Dairy farmers tend to choose other management options when prices go that high; that is, buying feed or sending stock on agistment in different locations with higher rainfall.

2.3 Demand for water

Demand for water has been driven by commodity prices and the level of supply as discussed in the two preceding sections. In this section other demand factors will be discussed.

The price of substitute goods in the form of feed for dairy cattle has been an important factor in reducing demand in the temporary market. At the beginning of 1998/99 some extension officers in the study region advised dairy farmers that at prices above A\$90/ML they were better-off buying feed rather than buying water to grow grass. This placed a ceiling on water prices during the years from 1998/99 to 2000/01. When the production of feed declined and prices increased due to the extended drought during 2001/02 and 2002/03 the comparative cost of water increased sharply and in some instances supply of feed was non existing or difficult and uncertain to obtain; this increased dairy farmers' willingness to pay for water. This was a contributing factor to record high prices towards the end of 2001/02, and again during 2002/03.

During periods with low natural precipitation and/or high evaporation within the study region the need for irrigation goes up and potentially increases demand in water markets with a resultant increase in the price. There are several examples of this impact in the market. The spring period of 2000/01 was particularly wet, which reduced the need for early irrigation and thereby reduced demand in water markets; the effect was lower prices. Conversely, the spring of 2001/02 was very dry and hot with strong dry winds; as a result evaporation was very high, and consequently the need for irrigation was up by 13% to 15% compared to past years. This contributed strongly to prices rising to very high levels around December (early summer) that year. During that same season, opening autumn rains were late in arriving, which extended the need to irrigate and added to the already very high demand that had resulted from low water allocations and high feed prices.

2.4 Concluding comments

The preceding discussions have given some strong theoretical arguments as to which factors to include in a quantitative analysis and have provided some anecdotal evidence of these factors at work in the market. The discussions, however, also indicate that a number of these factors are at play at the same time and will interact. This could suggest that it is likely to be difficult to differentiate these factors when applying quantitative methods. This issue is further complicated by a number of other factors, which have also had an impact on supply and demand for water

and thereby on farmers' willingness to pay. During the study period several policy changes have taken place limiting spatial restrictions to trade and changing the ability to trade between different classes of water entitlements. These changes have allowed a more diverse range of irrigators to compete for the same water and have thereby influenced prices in the market (Bjornlund, 2002a). Management decisions, made by the Authority managing the study region, have also influenced supply during the last two seasons by announcing the right to upstream trade of 5,000 ML under the substitution rule. During both years, this decision increased supply and resulted in a temporary drop in price until the market had taken up the additional supply.

To complicate matters still further, a number of other policy issues have impeded the operation of the permanent market and have thereby increased the use of the temporary market (Bjornlund 2002b). One factor is associated with taxation issues; temporary transactions represent annual income or cost with a tax implication in the year of transaction. For the buyers, who are generally higher income farmers (Bjornlund 2002c), the purchase represents a tax deduction, which helps to reduce their tax burden with about 40% of the price paid for water, while the sellers, who generally have negative or very low farm incomes, pay no or little tax on the proceeds from the sale. On the contrary, permanent transactions do not give any tax deduction or depreciation for the buyer, while it might represent a capital gains liability for the seller. Tax policies are therefore likely to increase buyers' willingness to pay for water in the temporary market, and they are likely to make sellers reluctant to use the permanent market.

Recent policy initiatives in Australia have generated a high level of policy uncertainty with respect to the future stream of seasonal allocations that will be produced by water entitlements. All catchments within the Murray–Darling Basin are currently going through a planning process during which water will have to be allocated to the environment before the remaining water resources are shared between consumptive users; as a result irrigators' access to water will be reduced. Consequently buyers of water entitlements in the permanent market do not know how much water they are likely to get when they pay for one megalitre of water entitlement. This uncertainty has made irrigators reluctant to buy water in the permanent market and has thereby increased the use of the temporary market – again increasing demand in that market and forcing prices up.

This diversity of drivers of price in the temporary markets and the ways in which they interact are likely to place limits on the strength of the quantitative analysis to follow.

3 SOME QUANTITATIVE ANALYSIS OF PRICES PAID

To test the hypothesized relationships between the drivers of farmers' willingness to pay for water, prices paid for water have been collected from within the GMID over a ten-year period from 1993/94 to 2002/03 together with data for the corresponding periods in terms of: 1) water allocation; 2) precipitation; 3) evaporation; 4) commodity prices for: lamb, mutton, wool, cattle, wheat, feeding barley, butter, milk powder, and cheese; 4) interest rate; 5) exchange rate (US\$); 6) trade weighted index; 7) inflation indexes; 8) index of rural commodity prices; and, 9) GDP figures for the farm sector, the non-farm sector, and per capita. During the early years of the period, trade in the temporary water market was limited resulting in low numbers of observed temporary prices. Over this period the market matured considerably and irrigators widely adopted the use of temporary markets (Bjornlund 2003b) resulting in a larger and more consistent set of observed prices.

These data have been used for the analysis in the following three sections. The water and commodity prices used for the correlation analysis and hedonic functions have been adjusted for inflation using the CPI inflation index while the time series analyses are based on nominal real time prices.

3.1 Some simple correlation analysis

Table 1 gives the Pearson Correlations and their significance levels between temporary market prices adjusted for inflation and the expected drivers of these prices. The variables are measured in real time with the exception of rainfall, which are lagged for 1, 2 and 3 periods because correlation coefficients became significant when lagged. For the commodities the same variables remained insignificant when lagged by 1, 2 and 3 months, while the other variables remained significant they changed their significance level. Lamb and wheat reduced their correlation coefficient with each lag but retained their sign (lamb down to 0.171 and wheat to – 0.380 at lag 3), cattle mutton and dairy products increased their coefficient but also retained their sign (cattle to -0.310, mutton to 0.447, butter to –0.498, skim milk to –0.652, and cheese to – 0.703 at lag 3). For macro-economic indicators insignificant variables remained insignificant. The correlation with interest rate goes up slightly at lag one but ends up at the same correlation at lag 3. Exchange rate, rural commodity index and the CPI inflation index have an increased correlation coefficient with increased lag while non-farm sector GDP and GDP per capita have a declining correlation coefficient, but all significant variables remained significant at the 0.01 level.

Table 1: Correlations between water prices and drivers July 1993 to June 2003.

Climate, supply and market	Correlation	Commodity prices	Correlation	Macro economic variables	Correlation
Allocation level	-0.611*	Lamb	0.299*	Interest rate	-0.459*
Rainfall Kyabram	-0.155	Mutton	0.360*	Exchange rate US\$	-0.386*
Rainfall Kyabram lag 1	-0.240**	Cattle	-0.287*	Trade weighted index	-0.117
Rainfall Kyabram lag 2	-0.212**	Wool	0.101	GDP per capita	0.566*
Rainfall Kyabram lag 3	-0.262**	Wheat	-0.389*	CPI Index base 1990	0.517*
Evaporation Kyabram	0.124	Feeding barley	0.122	CPI inflation index	0.628*
Volume Traded	0.260**	Butter	-0.440*	GDP farm sector	-0.025
Number of Transfers	0.419*	Cheese	-0.670*	GDP non-farm sector	0.609
Permanent Market Water Price	0.537*	Skim milk power	-0.573*	Index rural commodity prices	0.472*

All prices are adjusted for inflation. The figures are the Pearson Correlation between the variable and the price paid for water in the temporary market. * denotes significance at the 0.01 level and ** denotes significance and the 0.05 level

3.1.1 Climate, supply and market

A number of important observations can be made from Table 1. Prices in the temporary market are significantly correlated with the activity in the market both in terms of the number of transfers and the volume traded; the higher the level of market activity the higher the price, with the number of transfers being more significant than the volume traded. It seems that the higher the volume of water traded in the market the higher the scarcity and therefore the higher the price. In response to higher prices irrigators seem to buy less water more frequently, to accommodate their cash flow and to see if it should rain or if the allocation should be increased, which would make further purchases unnecessary. There is also a significant relationship between prices paid in the temporary and the permanent markets. This is supported by anecdotal evidence in the market. When temporary water was cheap and easily available irrigators relied heavily on temporary purchases; as temporary prices and water scarcity increased, it became increasingly uncertain to secure the necessary water at a reasonable price. Irrigators therefore became impatient with the temporary market and started to buy more water in the permanent market, and by so doing increased demand and prices in that market. Also, in an economically

efficient market the two prices should move in unison with permanent prices reflecting the capitalized value of the temporary price at a market discount rate.

There is an insignificant but logical relationship between price and precipitation and evaporation suggesting that prices decrease as rain increase and increase as evaporation increases. However the precipitation variable becomes significant at the 0.05 level if lagged 1 to 3 months showing that prices drop as precipitation increases.

3.1.2 Commodity prices

Correlations with commodity prices are predominantly significant at the 0.01 level and correlations increase with lagged variables suggesting that farmers' willingness to pay is influenced by commodity prices over the past three months prior to the month in which the transaction takes place. The signs of the correlation coefficients are however not entirely logical. The correlations between lamb, mutton, wool and feeding barley are positive indicating that higher commodity prices results in higher water prices, which could have been hypothesized. These farmers are the low value producers in the region and therefore good commodity prices for them increases the price at which they are willing to sell their water rather than produce their commodities. The coefficients for wheat and cattle however are negative suggesting that water prices increase as commodity prices decrease; this could be caused by the fact that most of these farmers are mixed farmers, they may therefore react to the price of the commodities with a positive coefficient. All dairy products are highly significant but with a negative sign, again this suggests that dairy farmers' willingness to pay increases as the value of their commodities decreases. Theoretically this does not make sense but has a logical explanation; the willingness of dairy farmers to pay is not driven by maximizing their output due to high commodity prices but rather by their desire to maintain their herd and production during a period with scarce supply. Over the ten-year period prices for dairy products have generally been drifting downward while water prices have increased. However, due to the significant capital investment in milking herd, milking equipment and permanent pastures, as well as a relatively high gross margin per ML of water used, dairy farmers have been willing to pay increased prices for water even if that has resulted in a reduced net profit per ML of water applied.

3.1.3 Macro-economic indicators

Price has a significant and negative correlation with interest rate and the exchange rate between the A\$ and the US\$. As interest rates increases farmers' willingness to pay for water decreases, which is consistent with economic theory. However the time series is not long enough to establish this relationship properly. Prices were low in the early nineties, when the market was young and allocations and interest rates high, while prices were high toward the end of the period when the general interest level and allocations were low. The correlation with US\$ is also negative suggesting that a lower exchange rate results in higher prices; this makes economic sense since a low exchange rate improves the terms of trade for the agricultural sector, which predominantly is export driven and paid in US\$.

The correlation with the index of rural commodities is significant and positive. This suggests that the more rural commodities in general increases in price the higher the willingness to pay. Given our findings discussed under commodity prices above this could be a surprise since many of the commodities tested there were negative, but could be an indication that it is other commodities, than those predominantly grown in the study region that drives prices, such as vegetables, horticultural commodities and wine grapes. Some of these commodities are grown in pockets within the study region but are more predominantly grown downstream. However, trade can take place from the study region to these downstream regions with higher valued productions.

The correlation with the CPI inflation index is significant and positive; this indicates that the increase in water prices has been well above inflation since the prices used for the analysis already have been adjusted for inflation (see 3.3 for a quantification of this). Finally there is a

significant and positive correlation with GDP for the non-farm sector and GDP per capita, while there is an insignificant correlation with farm sector GDP. This again suggests that water prices have not been driven up by a growth in the gross domestic product in the farm sector, since this sector has had a hard time during the last six of the ten years included in this study period. It also emphasizes that scarcity in supply due to the drought has forced high value producers with permanent plantings and pastures to pay higher and higher prices, not in pursuit of higher commodity prices but in an effort to remain in business during a period of drought. That the correlation is positive and significant with general and non-farm sector GDP simply reflects the fact that the period has seen general GDP growth in the society, despite a stagnating period in the rural sector, and that farming households in the study region have a significant level of dependence on off-farm work (Bjornlund, 2002c).

3.2 Some causal relationships – the use of hedonic functions

Hedonic functions were next applied to water prices in order to determine which of the identified price determinants had a significant impact on irrigators' willingness to pay for water and quantify that impact. In the first instance analyses were carried out with price as the dependent variable. This resulted in a relatively high R^2 value of 0.75 with cattle, wool and wheat prices together with the allocation level, evaporation figures, and interest rates comprising the independent variables. However, as expected there was strong multicollinearity between a number of the independent variables, this was particularly prominent between many of the commodity prices and most of the macro-economic variables; further more the Durbin–Watson statistics showed strong signs of positive serial correlation due to the time series nature of all variables.

Table 2: Hedonic function for temporary water market prices 1993–2003¹

Adjusted R ²	0.522			
F	10.971		Significance level	0.000
Variable	Coefficient	t	Significance level	VIF
Wool prices	0.211	3.01	0.004	1.438
Cattle prices	−0.843	4.16	0.000	1.304
Feeding barley prices lagged 1 month	0.457	2.49	0.015	1.147
Index of rural commodity prices	2.053	3.37	0.001	1.458
Allocation level	−1.001	3.98	0.000	1.223
Evaporation measured at Kyabram	0.092	3.48	0.001	1.195
GDP non-farm sector	0.005	2.43	0.018	1.193
Interest level	−18.499	2.01	0.049	1.121
Constant	−2.561	1.34	0.185	

¹ Dependent variable is the change in mean monthly prices paid in the temporary market. All prices both as dependent variables and independent variables are adjusted for inflation back to July 1993 prices. All variables are first differences indicating the change in the variable since the last data point.

First differences were therefore applied to both dependent and independent variables to eliminate the problems with serial correlation, and individual variables were selected as proxies for commodity prices and macro economic variables to overcome multicollinearity problems. Lagged variables were also tested as it would make economic sense that irrigators have a delayed reaction to changes in the underlying factors affecting their willingness to pay. However, in most instances, the real time variables were the most significant. Seasonal dummy variables were also

tested, since classical decomposition techniques showed strong seasonal variation. However, as could have been expected there are very strong levels of multicollinearity between these seasonal dummy variables and evaporation levels. It was decided to keep the evaporation variables in the model since that makes more conceptual sense. The final model is shown in Table 2. It has an adjusted R^2 of 0.522, which is a very acceptable level for models using first differences, and an F value of 10.971 indicating a significant model; the Durbin–Watson statistics of 2.469 shows that the model is free from serious autocorrelation; a maximum VIF figure of 1.458 and a maximum condition index of 2.416 prove that there is no indication of multicollinearity in the model; finally most variables are significant at the 0.01 level.

Commodities are represented in the model by three variables and the composite index of rural commodities. Firstly, we discuss the commodity variables included in the model: (i) water prices are positively influenced by wool prices, and correlation analysis tells us that wool prices are significantly and highly correlated with prices of wheat, barley and dairy products. However, while wool and barley have a positive correlation with temporary prices, wheat and dairy prices have a significantly strong negative correlation (see Table 1). This indicates that high prices of lower valued commodities such as wool and barley decreases the willingness of these farmers to sell which again raises the price at which they are willing to sell their water (see 2.1 and 3.1.2); (ii) water prices are negatively influenced by cattle prices; this probably reflects the facts that cattle farmers have not been price setters and that most larger cattle farmers are mixed grazing and cropping farmers trading in the water they normally use for wool or cropping rather than for cattle production. This to some extent also corresponds with findings by Bjornlund (2002c) that a large proportion of cattle farmers are smaller life style farmers; (iii) water prices are positively influenced by the price of feeding barley lagged one month. This is likely to be caused by dairy farmers since higher feed prices increases dairy farmers willingness to pay for water to grow grass rather than buy feed; the hedonic function suggests that dairy farmers willingness to pay for water increases by 45.7 cents for each dollar feeding barley increases in price per ton; and iv) water prices are positively influenced by a composite rural commodities index. This reflects the impact of other high value commodities grown within the area, as well as outside the area, such as vegetables and horticulture (see 3.1.3). This also corresponds with previous findings that the price of wine grapes has been the main driver of interstate trade and prices during the first two years of the pilot program (Young et al. 2000). Due to problems associated with obtaining consistent data related to these commodity prices on a monthly basis it has not been possible to include them in the model, but the composite index is a good proxy for the influence of these commodities.

Since dairy farming is the predominant high value user and the biggest buyer in the area, it is interesting to note that dairy prices are strongly negatively correlated with water prices and that in the first difference model dairy prices fail to be significant. Combined with the fact that feeding grain is positively related to price, this emphasizes the findings that that dairy farmers have been buying and paying in response to the cost of alternative feed to grass, in addition to the potential losses and costs associated with not providing enough feed (see 3.1.2, 2.3).

The allocation measures the level of supply and indicates that prices decrease by one dollar for each percent the allocation level increases. This is as expected (see 2.2 and 3.1.1), since at high allocations many irrigators do not need to buy extra water, which reduces demand and therefore price in the market. The allocation also reflects the level of natural precipitation in the catchment rather than within the local area, and also reflects the level of precipitation during the last winter seasons rather than the precipitation in real time. The evaporation factor on the other hand reflects the climatic conditions in the local area and affect demand in real time. If evaporation is high the need for irrigation is also high in order to not only supply the plants with the water they need, but also to replace what evaporates. The coefficient for evaporation is therefore positive, suggesting that the increased need for irrigation increases demand and therefore farmers' willingness to pay by 9.2 cents a ML per mm of evaporation during the month.

The final two variables in the model measure the impact of macro-economic factors. The coefficient for non-farm sector GDP is positive, which suggests that water prices adjusted for general inflation increases as the general wealth in the non-farm sector of the society increases, which should be expected as discussed in 3.1.3. Finally the coefficient for the interest level is negative, suggesting that the price of water goes down by \$18.50 per ML for each one percent the interest level goes up, which is in accordance with general economic theory (see 3.1.3).

3.3 The application of time series analysis

Given the main findings in the preceding two sections that water prices are most significantly driven by water scarcity and that prices have increased well in excess of general inflation in the economy, basic time series analyses were applied to the data set of nominal real time prices to further investigate these two issue and to enable the series to be described in terms of trend, seasonality and cycle. Simple time series decomposition is used in a multiplicative form. A regression model in an exponential form using a time index and seasonal dummy variables are used to estimate seasonal indices and a compounding growth rate (trend). The ratio to moving average approach is also used to estimate seasonal indices through the ratio of observed values to a 12 period-centered moving average. This 12 period centered moving average is then used to estimate the trend via a simple time index regression in exponential form. The advantage of the regression approach is that it enables confidence intervals to be estimated for the seasonal indices while the ratio to moving average method does not. For both models the cycle component is estimated as a ratio of the de-trended and de-seasonalised data to the observed data. The patterns in the cycles are then examined for relationships with causal factors.

Table 3: Time index regression model using seasonal dummies for temporary water market prices 1993–2003

R Square	0.656325			
F	17.02842	Significance level	0.0000	
Variable	Coefficients	t	Significance level	Exp (bn)
Constant	2.3748	10.3563	0.0000	10.7488
Time Index	0.0232	13.5181	0.0000	1.0235
Jan	0.0715	0.2469	0.8055	1.0742
Feb	-0.0739	-0.2552	0.7991	0.9287
Mar	-0.2059	-0.7104	0.4790	0.8139
Apr	-0.3644	-1.2572	0.2114	0.6946
May	-0.6658	-2.2966	0.0236	0.5139
Jun	-0.6890	-2.3761	0.0193	0.5021
Jul	-0.6868	-2.3692	0.0196	0.5032
Aug	-0.1025	-0.3536	0.7243	0.9026
Sep	-0.0267	-0.0922	0.9267	0.9736
Oct	0.1212	0.4184	0.6765	1.1289
Nov	0.0397	0.1368	0.8914	1.0404

Dependent variable is the natural log of price. Coefficients are in natural log form and are converted using the exponent in the last column. No dummy variable is recorded for December that becomes the base quarter for comparison, hence the coefficient for December is 0 and the exponent is 1.

It is expected that the series will show strong seasonal characteristics consistent with the changes in rainfall together with a compounding growth and significant cyclical activity that should be related to similar drivers as in the hedonic models.

The results for the regression approach are shown in Table 3. The R² of .65 and F value of 17.028 indicate a significant overall model. The t statistics show that the constant and time

index variables are significant but that only the May, June and July seasons are significantly different to zero. Hence we are not even 80% confident that any of the other months varies from the December figure. The exponent of the coefficients is used to convert the values from the log form and these are then normalized so that the seasonal indices sum to 12. These final season indices are indicated in Table 4.

Table 4: Calculated Seasonal Indices for temporary water market prices 1993–2003

Month	Seasonal Index	
	Regression	Ratio to Moving Average
January	1.28	1.24
February	1.11	1.06
March	0.97	0.95
April	0.83	0.81
May	0.61 **	0.63
June	0.60 **	0.60
July	0.60 **	0.58
August	1.07	1.13
September	1.16	1.21
October	1.34	1.34
November	1.24	1.23
December	1.19	1.20

* denotes significance at the 0.01 level and
 ** denotes significance at the 0.05 level

The seasonal indices from both methods are very similar but only those for May, June and July are significant, indicating that the other seasonal indices are not consistent. Since the seasonal fluctuations are related to the seasonal effects of rain and evaporation, the prices paid will fluctuate more with rainfall than with a fixed (monthly) seasonal effect. Only in May to July when rainfall is reasonably consistently high, and trading is limited, is there a statistically significant seasonal effect. This supports the results from the hedonic models and suggests that the prices are a function of actual rainfall, not “expected” rainfall. If the later was the cause of price fluctuation and not the actual rainfall then we would expect all seasonal indices to be significant and a better indicator than the actual rainfall.

Table 5: Simple exponential regression for time Index and 12 period CMA for temporary water market prices 1993–2003

R Square	0.688746			
F	234.5575	Significance level	0.0000	
Variable	Coefficients	t	Significance level	Exp (bn)
Intercept	2.2711	22.8054	0.0000	9.6902
Time Index	0.0224	15.3153	0.0000	1.0227

The seasonal indices can be interpreted in percentage terms. A value of 1 represents no seasonal effect with that period having the yearly average. The temporary water prices in May to July are only about 60% of the yearly average (seasonal index of .6). The March price is about average for the year. Prices in August through to February are above the yearly average with peak prices in October at around 34% above the yearly average.

In the previous regression model (Table 3) the seasonal and trend components are both estimated simultaneously. Using the classical decomposition model the data are first deseasonalised and then the trend component is estimated using a simple regression equation. The results for this regression are shown as Table 5. The results for this are quite consistent with the same parameters in the former regression estimate (Table 4). The functional form of the exponential model means that the exponent of the index variable can be interpreted as a growth rate. Using the results from Table 5 this exponent is 1.0227 implying a monthly growth rate of 2.27% or an annualised rate of 30.85%. This shows the dramatic underlying trend in the growth of temporary water prices as the market matures. While this growth has been experienced over the period of the data, it is not anticipated that this trend will continue as the region comes out of the recent drought; on the long term it is expected that growth will more closely follow the growth in the overall economy.

Figure 1: Ratio to moving average components temporary water market prices 1993–2003

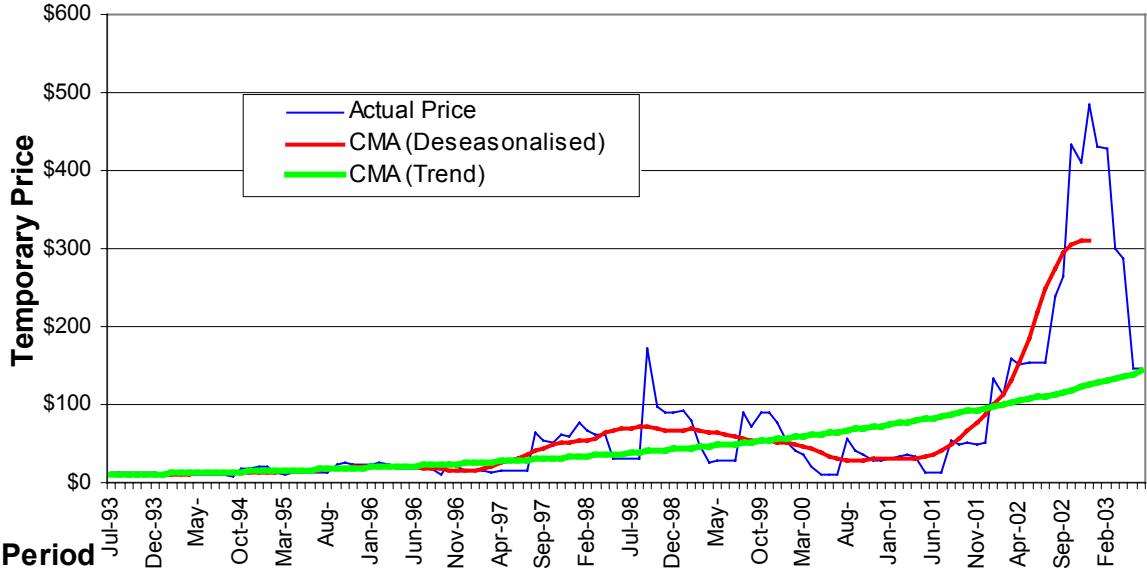


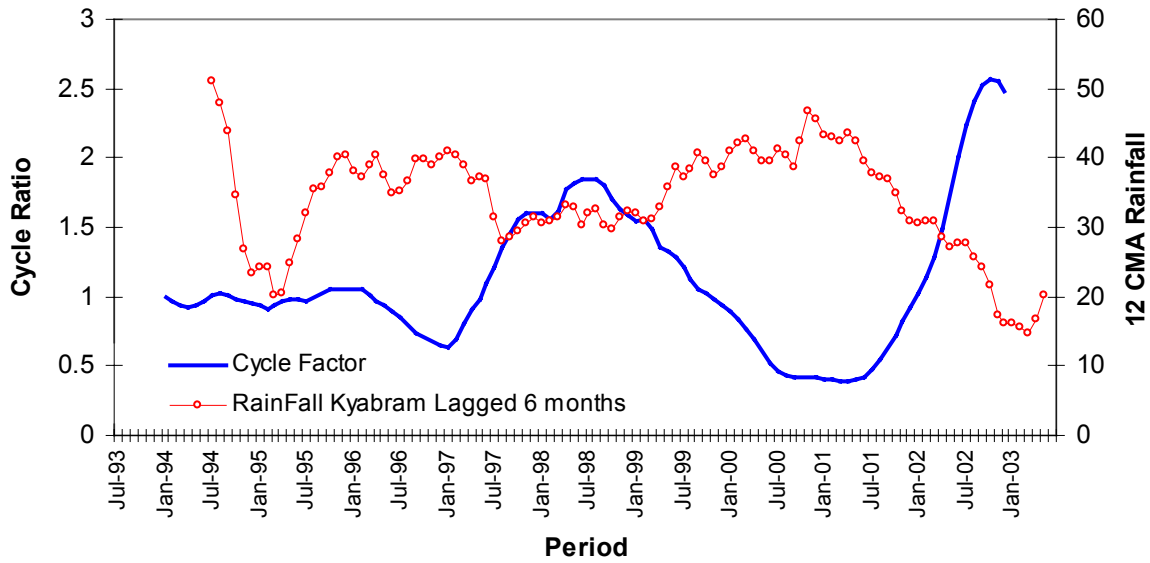
Figure 1 shows the actual prices, the deseasonalised (CMA) and the trend component. The ratio between the CMA and trend lines is the cycle ratio and this can be used to analyse the longer-term cycles. These cycles are notoriously difficult to estimate (in some markets they are quite random) and the difficulty generally lies in predicting the turning points, when the cycle moves from expansion to contraction and visa versa. As already stated, it is expected that the longer-term fluctuations in prices are likely to be related to fluctuations in rainfall. However since it is a longer-term fluctuation it should be related to longer run rainfall variations such as a yearly average. The cycles in prices might then be related to a lagged cycle in rainfall. The rainfall figures are deseasonalised using a 12 period moving average as for the prices. The long-term deseasonalised average rainfall is expected to be stationary series. In the absence of trend and seasonality any pattern represents a “cycle” in rainfall. The rainfall and prices cycles are shown in Figure 2.

The chart shows the strong negative relationship between the prices paid and the lagged moving average rainfall. This corresponds to a correlation coefficient of - .68. The rainfall cycle clearly shows the drought periods in the 1995, 1997–1998 and then the longer drought from 2001 through 2003. In response to these periods the prices have risen above the long-term trend and expected seasonal figures, creating the peak in the temporary prices. Price cycled downwards towards a trough when rainfall was good such as during 1996 and 2000. A simple regression is used to predict the cycle ratio from the lagged rainfall CMA.

To test the overall validity of the ratio to moving average model, a forecast is made and compared to the actual data. This forecast is based on the exponential trend, seasonal factors and

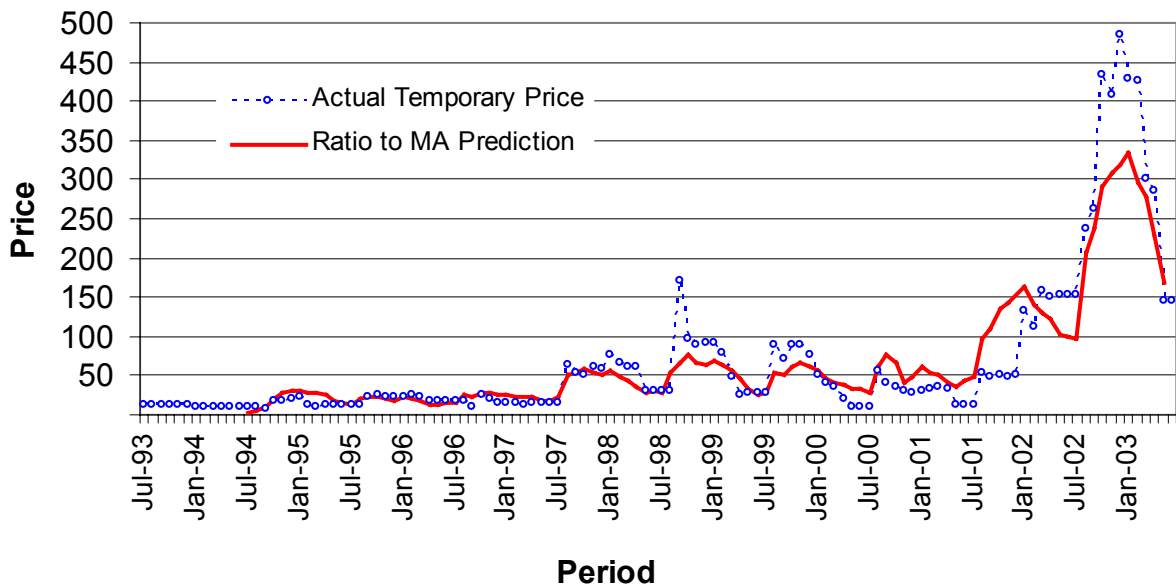
cycle ratios estimated from the lagged rainfall cycle. The forecast and actual prices are shown in Figure 3.

Figure 2: Cycle Ratios, temporary water and deseasonalised rainfall lagged 6 months



The model produces a good estimate for temporary prices. It clearly captures the long-term trend but has some over and under estimation in the seasonal factors. Much of this is likely to be related to the wider macro economic issues not captured in this model. Although the model does not acutely predict the amplitude of each peak and trough, it does quite accurately estimate the turning points. The estimation of the turning points in the 2002–2003 cycles is particularly impressive.

Figure 3: Actual and predicted values, temporary water market prices 1993-2003



4 CONCLUSIONS AND RECOMMENDATIONS

This paper analyses prices paid in the temporary water market within the Goulburn Murray Irrigation District in Victoria, Australia in order to identify the factors determining the willingness of irrigators to pay for water. Correlation, regression and time series techniques have

been applied to water market prices and factors hypothesized to influence farmers' willingness to pay and accept prices in the temporary water market. Economic theory suggests that the following factors should be important: (i) commodity prices; irrigators should be willing to pay a higher price for water, or only be willing to sell at higher prices, when the prices of the commodities they are growing are high; (ii) supply and demand; irrigators should be willing to pay more when supply is scarce, that is when allocations are low and when demand is high, which is during periods of drought and high levels of evaporation; and (iii) macro economic indicators such as interest rates, foreign exchange rates and GDP growth; irrigators should be willing to pay a higher price during periods with low interest rates, low exchange rate and high GDP growth.

The analysis suggests that the above factors have all had an impact on the willingness of irrigators to pay for water during the ten-year period. However, commodity prices have had a limited impact, which has not always been consistent with economic theory. In the hedonic function many commodities have a negative regression coefficient suggesting that farmers are willing to pay a higher price for water when they receive low commodity prices. This is inconsistent with economic theory but consistent with developments within the study region over the ten-year period. Most of the period has been dominated by drought conditions and the region has therefore experienced severe levels of water scarcity and very high levels of demand. All the analyses conducted for this paper suggest that the most important drivers of farmers' willingness to pay for water are water supply and demand represented by the level of seasonal allocations as well as precipitation and evaporation. High value farmers with investments in long-term plantings, pastures and equipment are forced to pay high prices during periods of scarcity to limit their potential losses caused by draught. During periods of scarcity there is little opportunistic buying by irrigators trying to benefit from high commodity prices since the price of water during such periods is far in excess of what can be made on any annual crops and also on dairy production, even when prices for these commodities are very good. This is likely to change during periods of normal or plentiful supply when the protective high value buyers leave the market and prices therefore return to levels reflecting water's productive value. Finally, both interest rates and exchange rates with the US dollar have a significant negative impact on price, with lower rates resulting in higher willingness to pay. Price is positively related to GDP growth in the non-farming sector, but not with growth in the farming sector. This further highlights the fact that farmers have paid high prices not due to economic growth in their sector but rather to protect their production during a period of water scarcity and therefore very low economic growth within the sector.

Due to the pressure of water scarcity water prices have increased with an implied growth of more than 30% per annum, well above general inflation. This exponential growth is also likely to stop once supply normalizes. While the findings from this research are significant and important it is essential that the analysis be repeated when a longer time period is available, which includes periods of normal and plentiful supply.

ACKNOWLEDGEMENTS

This research project is funded by the Australian Research Council and ten industry partners: Dep. of Water Land and Biodiversity Conservation, Dep. of Primary Industries, SA Water, Central Irrigation Trust and River Murray Catchment Water Management Board in South Australia, Goulburn Murray Water, and Dep. of Natural Resources and Environment in Victoria, Murray Irrigation Limited, and Dep. of Land and Water Conservation in NSW, and the Australian National Committee on Irrigation and Drainage.

REFERENCES

- Adamowicz, W.L. and T.M. Horbulyk (1996): The Role of Economic Instruments to Resolve Water Quality Problems. *Canadian Journal of Agricultural Economics*. 44, 337-344.
- Bjornlund, H. (2003a): Efficient water market mechanisms to cope with water scarcity. *Water Resources Development* 19(4), 553-567.
- Bjornlund, H. (2003b): Farmer Participation in markets for temporary and permanent water in southeastern Australia. *Agricultural Water Management* 63(1), 57-76.
- Bjornlund, H. (2003c): Water markets as risk management and adjustment tools within irrigation communities. *Proceeding from the XI World Water Congress*. Madrid 5-9 October.
- Bjornlund, H. (2003d): What is driving activities in water markets. *Water*, November, 30-36.
- Bjornlund, H., (2002a): Signs of maturity in Australian water markets. *New Zealand Property Journal*, July, 31-46.
- Bjornlund, H. (2002b): What Impedes Water Markets. *Proceedings from the 4th Australasian Water Law and Policy Conference*, Sydney 24-25 October, 165-176.
- Bjornlund, H. (2002c): The socio-economic structure of irrigation communities – water markets and the structural adjustment process. *Journal of Rural Society* 12(2), 123-145.
- Bjornlund, H. and McKay, J. (2000): Are Water Markets Achieving a More Sustainable Water Use. *Proceedings from the X World Water Congress*, Melbourne, March, CD-Rom
- DNRE, Department of Natural Resources and Environment (2001): *The Value of Water – A guide to water trading in Victoria*. Melbourne: DNRE.
- Young, M., D. Hatton McDonald, R. Stringer, and H. Bjornlund (2000): *Inter-State Water Trading: A Two-Year Review*, CSIRO Land and Water, Adelaide.